

List of figures:

Figure 1. A map of southern Sweden including both the sites of collection of *B. st* queens for parasite pre-screening (see text), shown by white and black dots, and the transects that were subsequently developed for capturing queens for reintroduction to Dungeness (Kent), shown by grey lines.

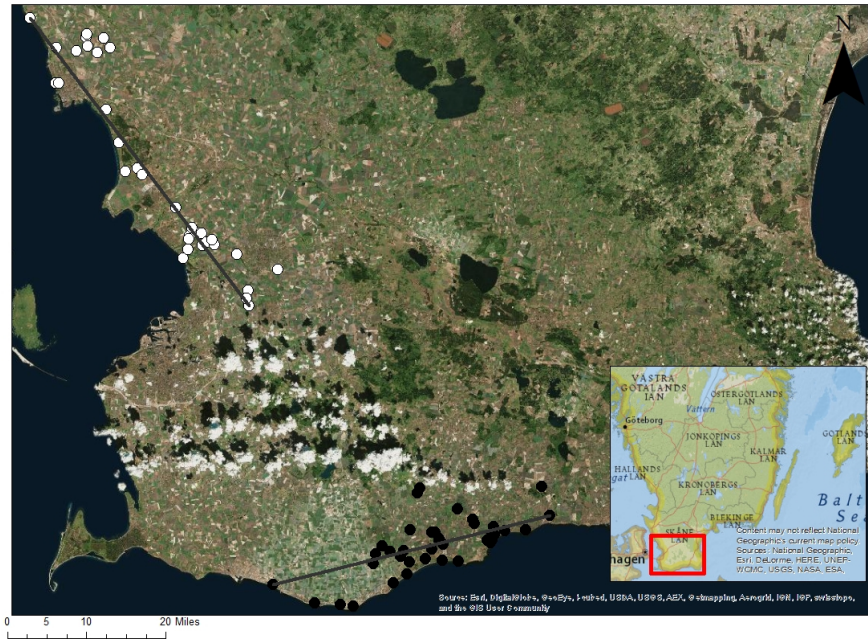


Figure 2. *B. subterraneus* queens in quarantine.

